



How to Connect Uniview Cameras to a PoE NVR?

Title	How to Connect Uniview Cameras to a PoE NVR?	Version:	V1.0
Product	NVR	Date	11/21/2023

How to Connect Uniview Cameras to a PoE NVR?

Description

For some certain Uniview PoE NVR models, there will be half of the channels that are built-in PoE ports on the rear panel of the NVR for you to connect your camera that support PoE function. Such as 16 channel NVRs with 8 built-in PoE ports and 32 channel NVRs with 16 built-in PoE ports.

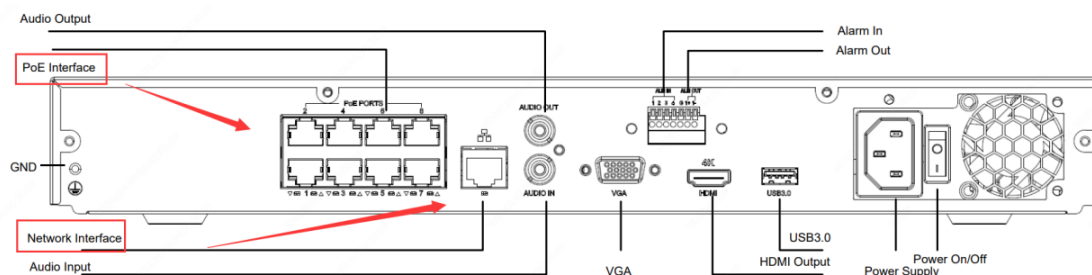
In this case, please refer to the document below to add all your cameras.

Note: This method is applicable to most of the scenarios, if the method still cannot solve your problem, it is recommended to consult our Tech Support Team.

https://global.uniview.com/Support/Service_Hotline/

Preparation

Take NVR302-16S-P8 as an example. It is a 16 channel NVR with 8 built-in POE ports. To add more than 8 cameras on this NVR, a network switch is needed.



As shown in the above picture, a PoE NVR has 2 NICs (External Ethernet NIC and Internal PoE NIC). Both NICs can be connected with cameras. There are 2 different methods to add all 16 cameras.

Operating Steps

Method 1 Connect some cameras to the NVR's PoE ports directly and other cameras to a network switch.

Step 1 You can connect 8 cameras that support PoE function to the NVR's PoE ports and

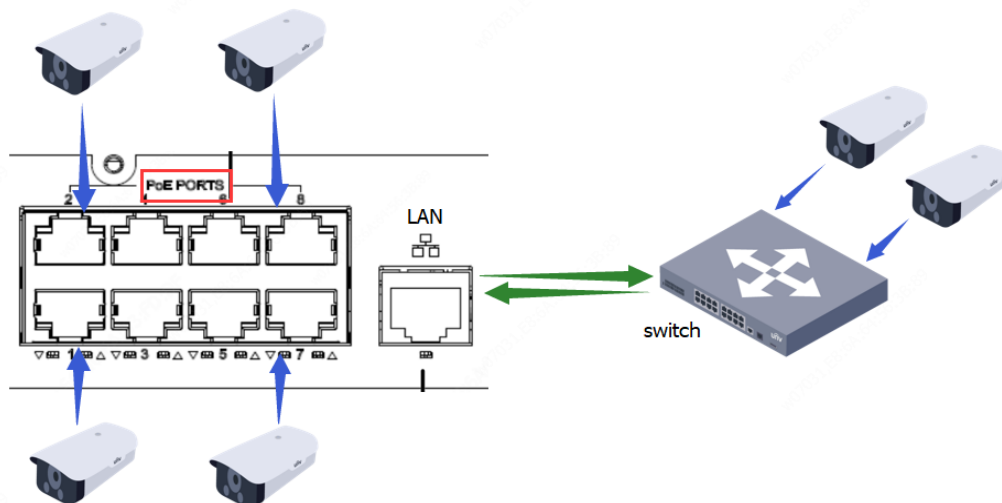
Step 2 Connect the other 8 cameras to a network switch. Meanwhile, the network switch needs to be connected to the NVR's external Ethernet port (the port with three squares' icon on it).

Note:

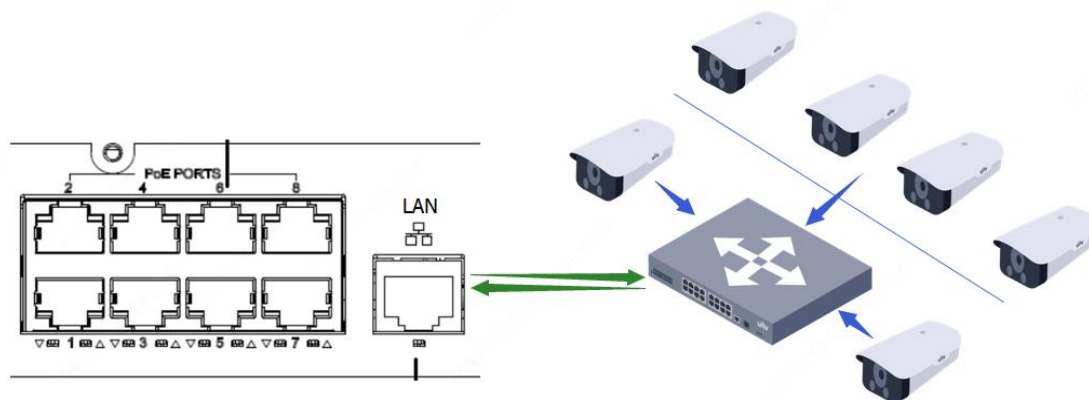
1. The NVR's external Ethernet NIC and the PoE NIC must be set up to different IP segments. Cameras connected to the NVR's PoE ports need to be in the same IP segment as the NVR's POE NIC, and cameras connected to the NVR's external Ethernet port need to be in the same IP segment as the NVR's external Ethernet NIC.

Title	How to Connect Uniview Cameras to a PoE NVR?	Version:	V1.0
Product	NVR	Date	11/21/2023

2. Each PoE port of the NVR is designed to connect to one camera only. Please do not connect a network switch to the NVR's PoE port, otherwise it may cause problems to the NVR's PoE NIC.



Method 2 Connect all the 16 cameras to a network PoE switch and connect the switch to the external Ethernet port of the NVR.

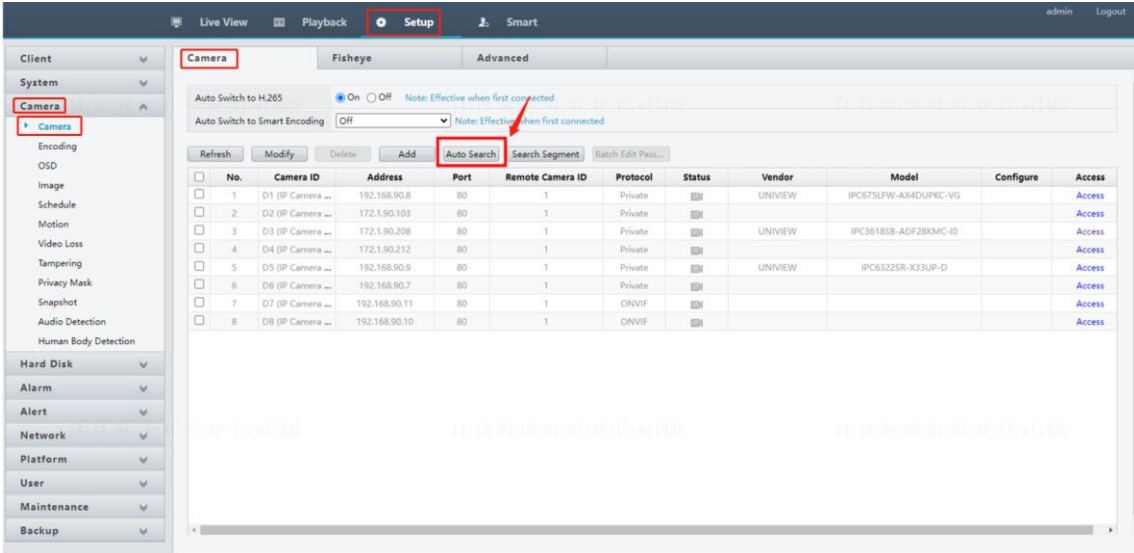


Title	How to Connect Uniview Cameras to a PoE NVR?	Version:	V1.0
Product	NVR	Date	11/21/2023

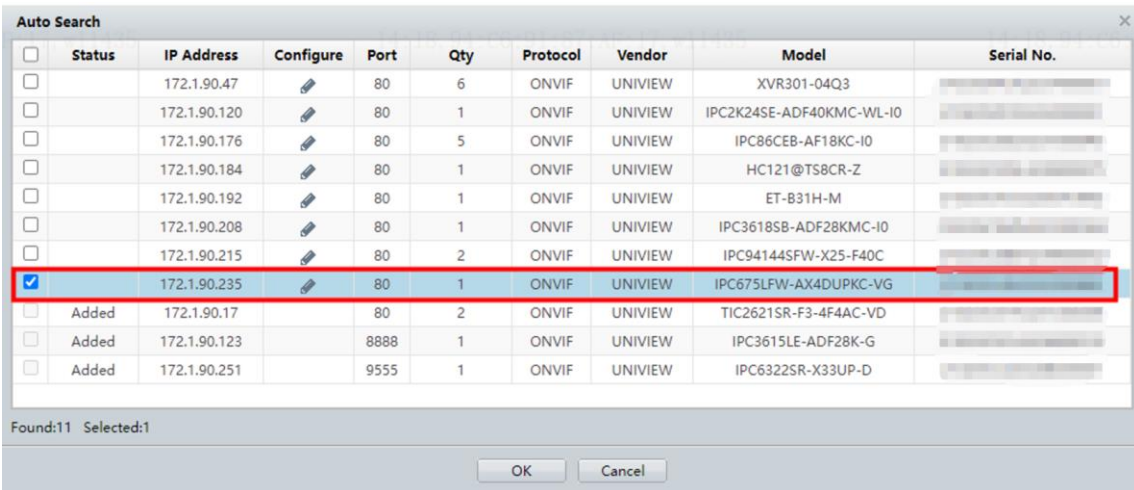
How to add IP cameras to the NVR's PoE channel?

Add from the NVR's web interface

Step 1 Click **Auto Search** to find all cameras in same LAN.

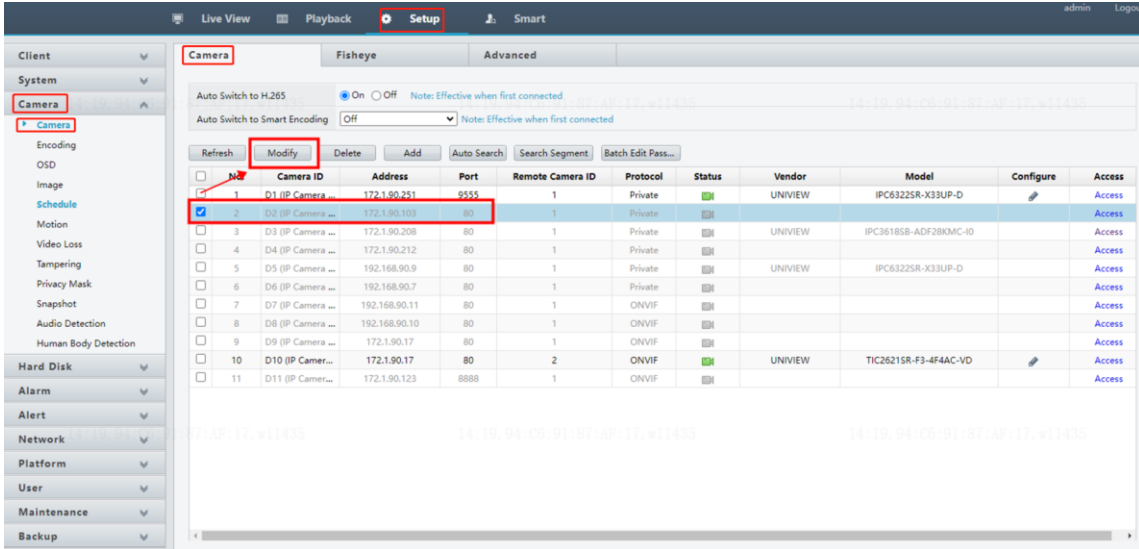


Step 2 Record the **IP address and port number** of the camera you need to add.

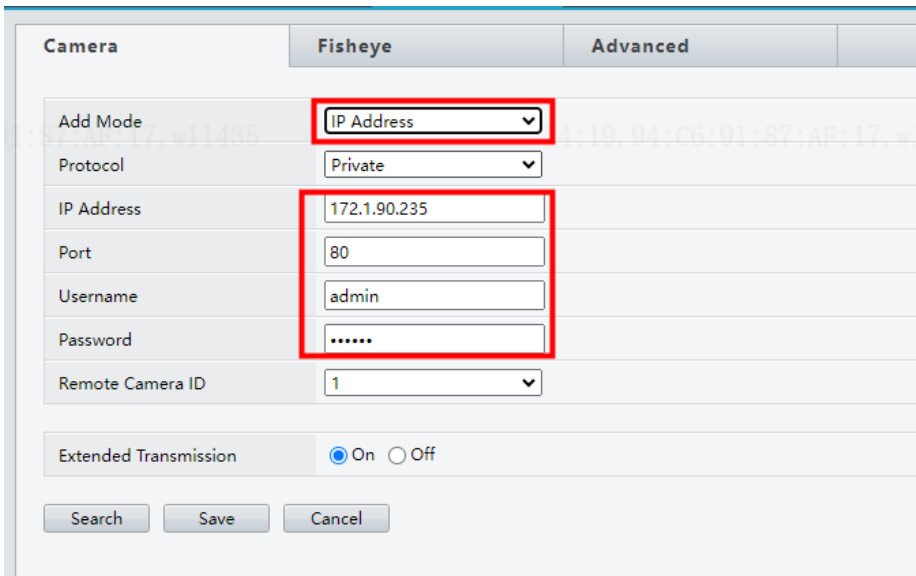


Step 3 Choose one of the PoE channels (usually the first half in the camera list) and click **Modify**.

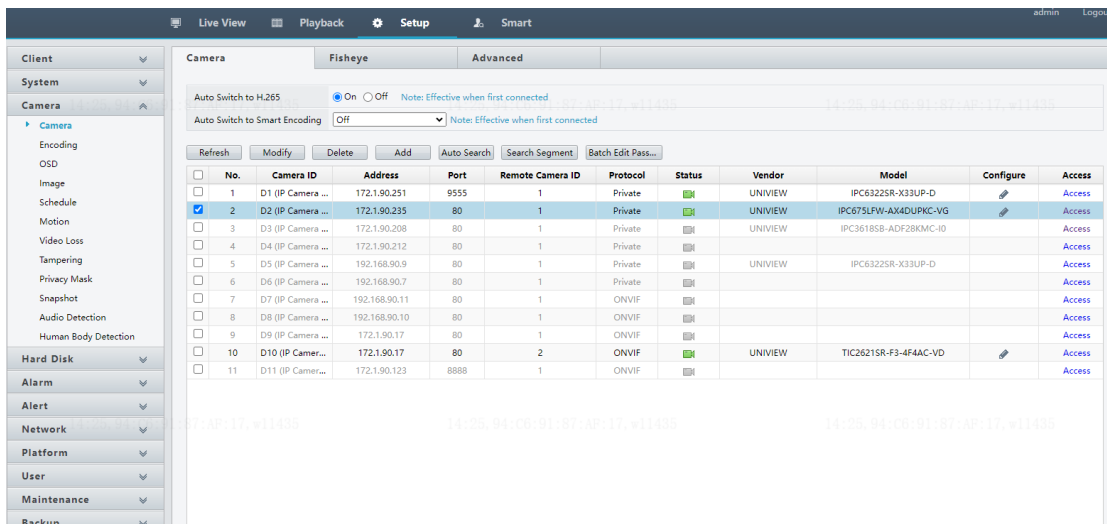
Title	How to Connect Uniview Cameras to a PoE NVR?	Version:	V1.0
Product	NVR	Date	11/21/2023



Step 4 Choose **IP Address** as the add mode and **Private** as the protocol (for Uniview cameras only) and then enter the correct IP address, port, username and password of the camera. Click **Save**.



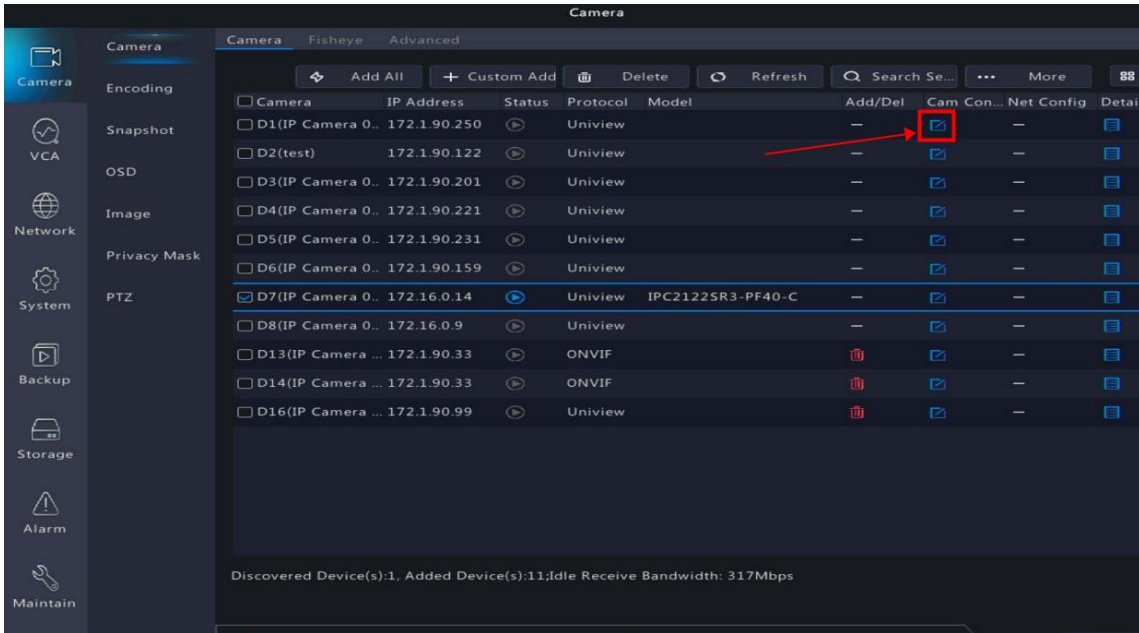
Step 5 Wait for a moment and the camera will come online automatically.



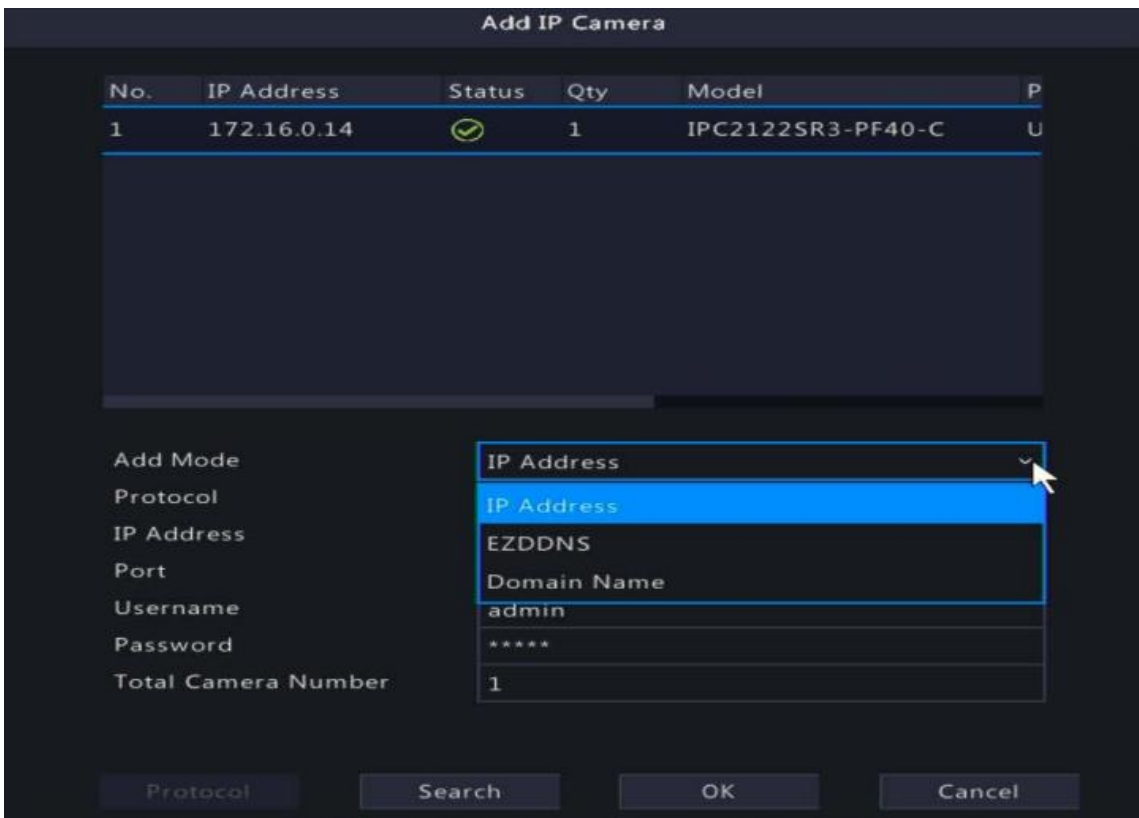
Title	How to Connect Uniview Cameras to a PoE NVR?	Version:	V1.0
Product	NVR	Date	11/21/2023

Add from the NVR's Monitor (GUI)

Step 1 You can double click any existing channels or check one camera and then click **Cam Config** to enter the IP address of the camera or choose cameras to manually add it.



Step 2 Choose **IP Address** as the add mode and **Private** as the protocol. Make sure the port, username and password of the camera are all correct and then click **OK** to save the configurations.



Step 3 Wait for a moment and the camera will come online automatically.